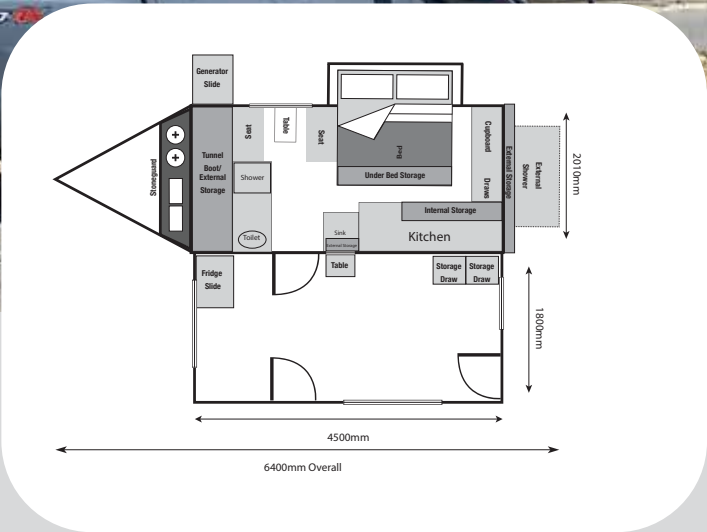


# XPEDITION MKII HYBRID



## FITTED WITH QUALITY COMPONENTS



1300 594 000

[BLUEWATERCAMPERS.COM.AU](http://BLUEWATERCAMPERS.COM.AU)

ONLY  
**\$59,990\***

\*Registrations, Dealer and Delivery charges may apply

# XPEDITION MKII

## HYBRID CAMPER TRAILER

ONLY  
\$59,990\*

\*Registrations, Dealer and Delivery charges may apply

### GENERAL SPECIFICATIONS

Tare - 2350kg including standard features

ATM - 3000kg

Payload - 650kg

Ball Weight - 200kg

Dimensions - (L) 6.4m x (W) 2.1m x (H) 2.45m

### TENT SPECIFICATIONS

Fully Enclosed Annex with Roof, Walls, Side Skirt, PVC Floor, verandahs & Poles included

Heavy Duty 'Close Weave' Canvas 440g/m<sup>2</sup> (15.5oz) waxed and proofed

Self repairing zippers to all windows & doors

Awnlux Roof Mounted pull out style awning with anti flap kit included

Aussie Traveller Dual entry door with flyscreen mesh

Drop down Bagged Shower Ensuite, swings out on Gas Struts

Windows Tinted, Inside Flyscreen and Blockout Blinds

### SLEEPING

Sleeping accommodation for 2 + sml Child (optional Bunk Available for 4th Child)

Queen Size 20cm Pocket Spring Mattress with Memory Foam Topper

Café Style seating area that converts to a small single bed, or L Shaped Lounge with Lagun Leg swingaway table

Reading lights either side of bed with 12v socket & USB Connection

### ELECTRICAL

900ah Lithium Batteries with in built BMS

800W Mono Crystalline Solar Panels

Redarc Manager Alpha 50 BMS with Redvision Display

Redarc 2000W RS3 Pure Sine Wave Inverter with Pass through to 240V system

Truma Ultra Rapid Hot Water 14 litre storage unit, Operates on Gas & 240v

Truma Sapphire Comfort Ducted Air Conditioner 2.4kw Cooling and 1.7kw Heating

240V fully installed by local certified electrician with 15A inlet

24" Engalon Smart TV with built in Chromecast and BT Connection

Premium MP5 Stereo Unit 7" Screen with integrated 4 Speaker Entertainment System & Bluetooth

12V 3speed Gimmel Fan 360 degree range

Anderson plug connectors for vehicle and solar input for extra panels

Electric Emergency Breakaway with 2 ADR Compliant Safety Chains

Multiple 12v & USB sockets, inside and out

Water Level Indicator Gauges For each Fresh Water and Grey water Tank

Internal and External LED Lights with Orange Insect Repellent option

### STORAGE

Multiple storage Compartments inside & out

Fridge Slide: 975mm long x 560mm wide x 540mm high

Generator Slide: 705mm long x 495mm wide x 470mm high

Provision for Rear bike rack tongue / receiver

2 x gas bottle holders & 2 x Jerry Can tie downs

Large Tunnel Boot storage at the front

### TRAILER SPECIFICATIONS

Heavy Duty Coil Springs paired with Adjustable Independent Suspension

Lovells Gas Shock Absorbers Heavy Duty 16mm Eye

Diesel Heater 2kw Plumbed with 15l tank

Theftford 3 Burner Stove, sink, dish drainer, 12v Light, bench Extension & Gas Compliance

Kitchen fully plumbed gas, water and electric, no manual connections required

Dometic Internal Sink with tap and plumbed to Grey water tank

4 'drop down' adjustable stabiliser legs - Optional ARK Jack Legs available

Cruisemaster D035 Hitch 3.5T and trailer plug included to suit your tow vehicle

Theftford Toilet and Shower internal Ensuite with Extraction fan - Optional OGO Composting Toilet

Swing down Aluminium Entry step

Rock Sliders each side to protect underbody

Dual rear rated 4.5T Heavy Duty recovery shackles

265/75 R16 MT or AT Tyres on Alloy Rims, Rear mounted spare Tyre with Toolbox (second spare opt)

200ltr Total Fresh Water capacity (F-80ltr & R-120ltr) + 60lt Grey Water Tank - Poly Food Grade Tanks

John Guest water hoses and Fittings, Watermarked Food Grade safe.

Drawbar Mounted Water tap

External Hand Shower to outside Ensuite with hot/Cold operation

Seaflo 9.5lm Water Pump with John Guest Hose and Fittings

Seaflo Mains water connection with Pressure Reducing Valve

BBQ Bench provided with 2.5m Bayonet Hose Connection

Fully Welded Aluminium Body, Underbody Sealer, Proof Coated with Mud Flaps

Drawbar Full Length RHS Galvanised 120x50x4mm

RHS Galvanised Chassis 100x50x4mm Proof Coated

12" Electric Brakes with Mechanical Handbrake and Electric breakaway

Positive Pressure Dust Reduction Twin Fan Fitted

ARK XO 750kg rated Off Road Dual Wheel Jockey Wheel

Electric Actuator Lifting Roof for easy automatic opening, with manual Over Ride

\*\*\*LIFETIME CHASSIS AND DRAWBAR WARRANTY\*\*\*

ALL PRODUCT INFORMATION, SPECS AND PRICING CORRECT AT TIME OF PRINTING AND MAY BE CHANGED BY THE MANUFACTURER WITHOUT NOTICE.  
PLEASE CHECK WITH YOUR CUSTOMER SERVICE REPRESENTATIVE FOR ANY UPDATES.

VISIT OUR WEBSITE FOR UPGRADES LIST AND PHOTO GALLERY

[BLUEWATERCAMPERS.COM.AU](http://BLUEWATERCAMPERS.COM.AU)

1300 594 000



## VISIT US AT ONE OF OUR SHOWROOMS

WESTERN AUSTRALIA (MD31555)

19 Gillam Drive  
Kelmescott, WA 6111  
T: (08) 6244 2077

VICTORIA (AGENT)

Eagle Outdoors  
2/55 Sette Circuit,  
Pakenham VIC 3810  
T: (03) 5945 5300

SOUTH AUSTRALIA (AGENT)

Barossa Off-Road  
3/27 Theen Ave  
Willaston, SA 5118  
T: (08) 8522 1141

ALBURY/WODONGA (AGENT)

Albury/Wodonga 4x4  
5 Kendall Street  
Wodonga, VIC 3690  
T: (02) 6056 1138

